

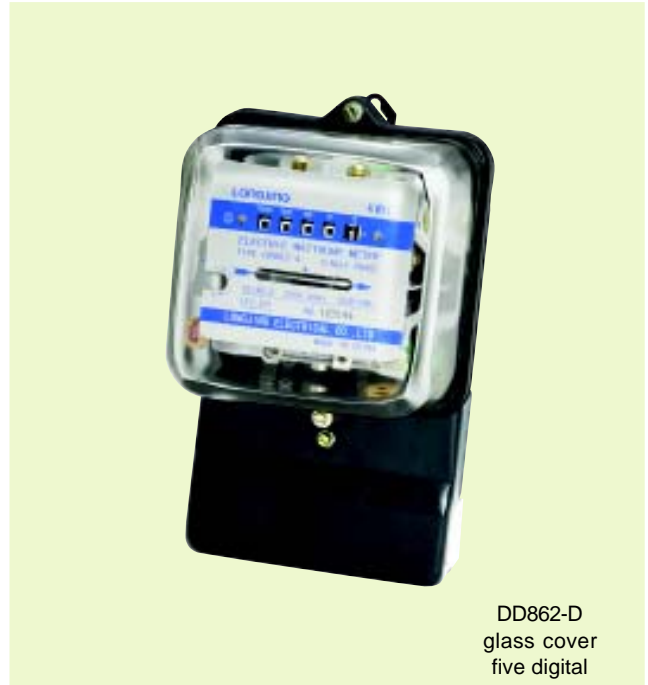
DD862 Single-phase Watt-hour Meter

Application

The DD862 single-phase watt-hours meter, an inductive meter, is to meter electric energy consumption. As standard product, it's technology index complies with GB/T15283-1994, the China nation standard, and IEC521-1988. It is suitable for service at the occasion with environment temperature of $-10\text{;}\varnothing\sim+50\text{;}\varnothing$ and relative humidity no more than 85%.

Structure feature

The electromagnetic component is horizontal. The electromagnetic part features separation form. The iron core is half-closed plug-in strip type; the current component adopts two-grade compensation to leave the meter a wide load characteristic. The full-plastic voltage coil can undergo shock by caused by instantaneous big voltage. The bearing structure, alternative of two gemstones and magnetic shaft can assure long life. The two ends of wheel shaft of metering device adopt corundum structure to lower attrition to keep the data stable. The bracket is formed by aluminum alloy die-casting to leave it outstanding mechanical performance. The two-pole Al-Ni-Cobalt damp magnetic steel has high coercive force and features high stability. The copper wiring post and the metlbond plastic wiring box are of excellent insulation.

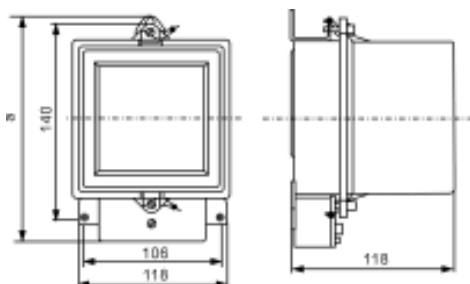


DD862-D
glass cover
five digital

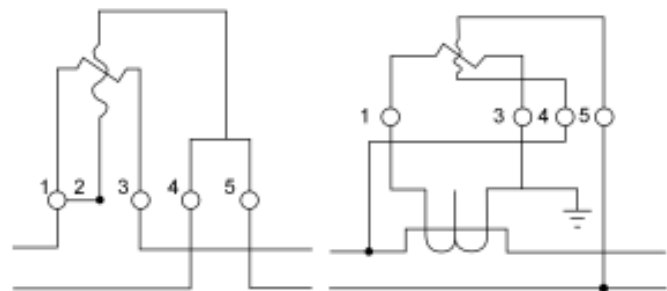
Specification and main technical data

Type	Reference voltage(V)	Basic current I _b (A)	Reference frequency(Hz)	Accuracy (class)	Starting current(%I _b)	Voltage circuit	Active power consumption of
DD862	110 220 240	1.5(6) 2.5(10) 5(20) 10(40) 15(60) 20(80) 30(100)	50~60	2.0	$\leq 0.5\%I_b$	$\leq 2W/8VA$	$\leq 2.5VA$

Outer and mount dimension



DD862 wiring diagram



Specification(A)	I _{max} ≤ 40A	I _{max} > 40A
a	167	173